



Pacific Bay
LUXURY RESIDENCIAL



SMART INVESTMENT

- Smart Investments in Real Estate
- High Returns
- Appreciation Potential
- Instant Equity
- Rental Income
- Cash Flow

ROI 15-18%

THE ART OF GOOD LIVING

A destination, a dream, a place that will remain inside your heart

Services and amenities provided are at the discretion of the developer and subject to the rules and regulations of Pacific Beach. Marketing materials within are subject to change and used as a representation of Pacific Beach Luxury Residential 2020.

WHY CABO?

Cabo has the most expensive and high-end properties in the country.

Cabo is the destination where most American's and Canadians invest and have a second home.

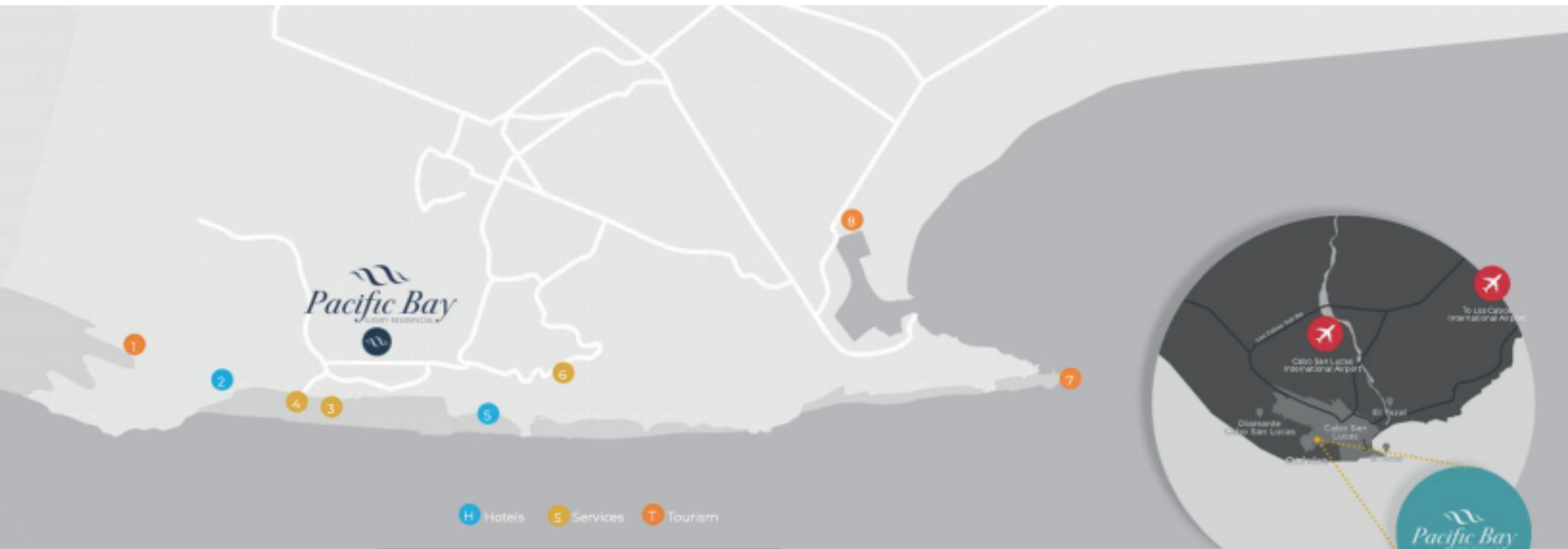
Cabo has maintained a capital gain in real estate of 15% for the last 5 years.

Cabo is recognized to have the most famous Golf courses:

- Jack Nicklaus
- Tiger Woods

Cabo has the highest demand for private jet charters.





LOCATION
 LOCATION
 LOCATION

- 1 Lighthouse
- 2 St. Regis
- 3 Beach
- 4 Steakhouse
- 5 Pueblo Bonito
- 6 The Market
- 7 The Arch
- 8 The Marina



**Pueblo Bonito
 Sunset Beach Golf
 & Spa Resort**

Overlooking the Pacific Ocean, luxury and the tranquility of the Old World welcomes those who are present.



The Market

A unique gastronomic and shopping experience in Cabo San Lucas. Inspired by the big "food halls" of Europe.



Casa Club

This straw roof oasis gives life to the Steakhouse and the Bar Hoyo 19.



EXCLUSIVITY

Pacific Bay is surrounded by exclusivity,
designed to surprise every guest



INTERIOR
DESIGN

Let's Design Your Dream Home!

Plan your interior design project with us. Includes floor planning, furniture layouts with 3D views, and assistance with furniture, fixtures, finishes and installations.



LANDSCAPING

Enjoy amazing sunsets and view the vibrant sea life right from your private terrace





PERSONALIZE YOUR
SMART HOME!

- Alexa
- Smart Surround Sound
- Smart Light Bulbs
- Smart Curtains







*A*LL BEDROOMS EMBRACE
STUNNING OCEAN VIEWS







APARTMENT PLAN

TOTAL AREA: 180 m²

- 3 BEDROOMS
- WALK-IN CLOSET
- 3 BATHROOMS
- DINING ROOM
- TERRACE WITH 180° OCEAN VIEW
- EQUIPPED KITCHEN
- LAUNDRY ROOM
- ACCESS CONTROL
- INDOOR PARKING, 2 SPACES PER APARTMENT
- CENTRAL ELEVATOR
- INTERPHONE WITH SURVEILLANCE CAMERA
- EXCLUSIVITY AND LOW DENSITY
- LOW HOA

ACCESS TO HIGH TIDE BEACH AT A DISTANCE OF 2 MINUTES





AMENITIES

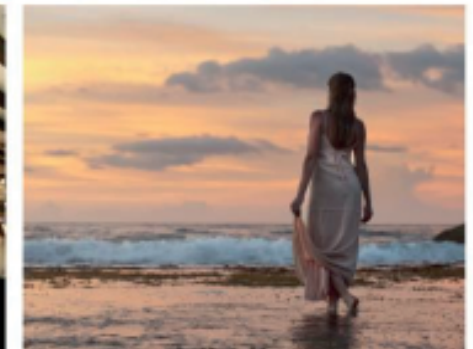
- Wide terraces with 180° ocean views
- Pool and sundeck
- Access to the beach
- Golden sandy beaches

LIFESTYLE

PARADISE IS WAITING TO
EMBRACE YOU

- Unforgettable sunrises and sunsets
- Outdoor activities that will fill your mind and soul with great energy
- Awaken your senses surrounded by nature

LIVE AND ENJOY THE LIFE
YOU HAVE DREAMED OF





Interested in investing with us?
Contact us:
gruposamano@hotmail.com